



Se ha desarrollado para cumplir con los requisitos de la EN81-1 y EN81-20 y diseñado para cables de tracción de correa plana de ascensores.

Ensayado siguiendo los requisitos marcados en EN13411-6.

This product has been developed to meet with **EN81-1** and **EN81-20** and designed for belt the traction ropes of elevators.

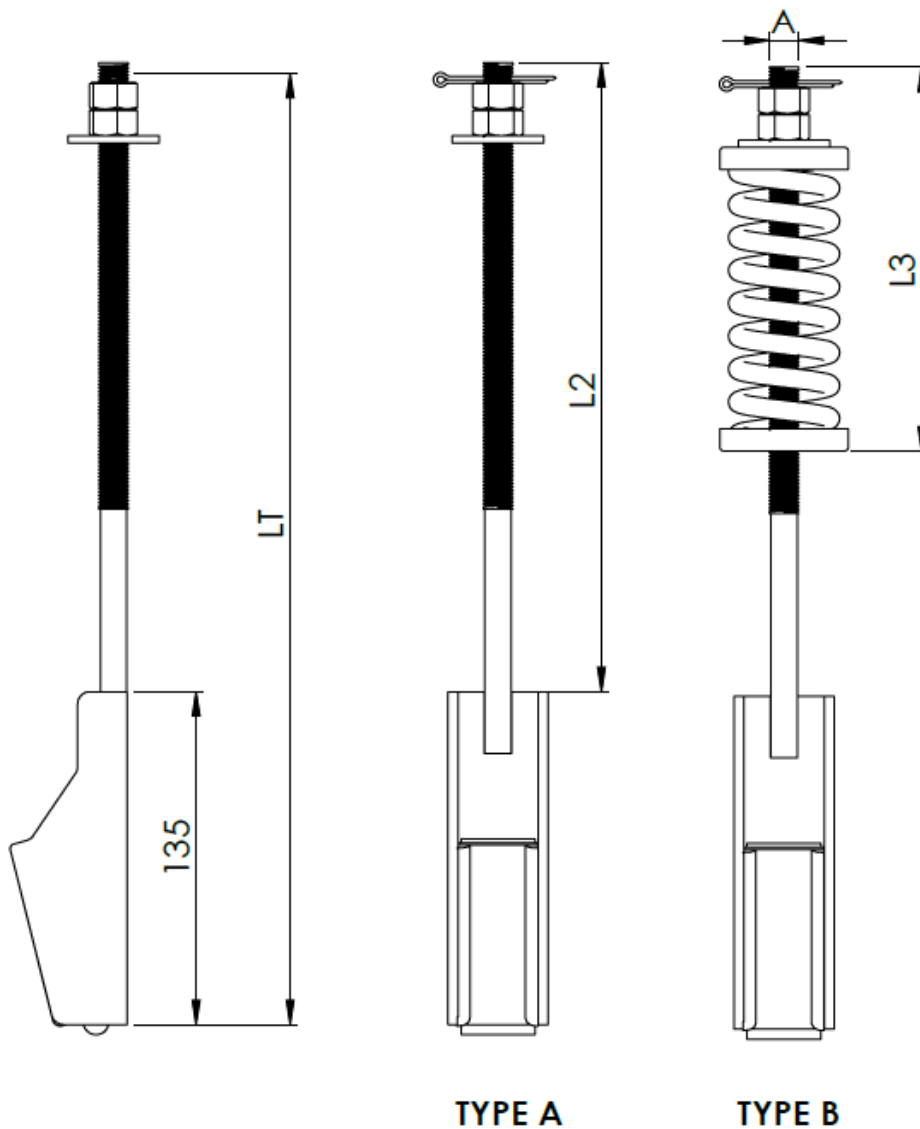
Tested according the requirements on the EN13411-6 standard.

- 100% TRACEABILITY
- IIW CERTIFIED INTERNATIONAL WELDING ENGINEER (IWE)

RIGID BELT SOCKET

Cómo hacer un pedido / How to order: **BS-30 - TYPE A**

Code	Rope width	A	LT (mm)	L2(mm)	L3 (mm)
BS-30	30	M12	390	255	155
BS-50	50	M16	457	281	201



TYPE A

TYPE B

25,36 & 60 mm width Belt Sockets under request